



Economic Mobility Pathways Pilot (EMPP)

Canada's complementary pathways model for refugee labour mobility

Dianne Rainville, April 4, 2023



Immigration, Refugees
and Citizenship Canada

Immigration, Réfugiés
et Citoyenneté Canada

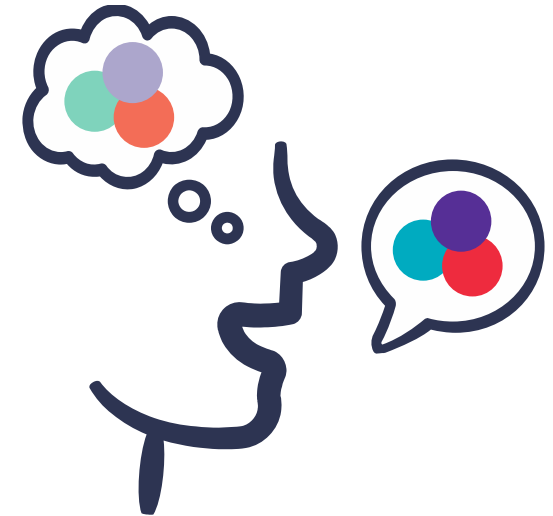
Canada



PURPOSE

Today's presentation will cover:

- What is the EMPP and how it works
- EMPP Partners
- EMPP at a glance
- Support for newcomers' settlement
- How to get involved



WHAT IS THE EMPP?



The EMPP **combines refugee resettlement and economic immigration**. It offers a set of facilitation measures that help **skilled refugees and other displaced people come to Canada as permanent residents** through existing economic pathways.

Announced on March 27th, a [new Federal EMPP pathway](#) will launch in Summer 2023.

Canada's economic immigration programs generally require:

- A job offer for full-time employment
- Proficiency in English or French
- Education and/or training
- Work experience
- A nomination, recommendation or endorsement from a PT or community



Facilitation measures include:

- 🔑 NGO assistance
- 🔑 Low-interest loans to meet settlement funds requirements
- 🔑 Waiving application and biometrics fees
- 🔑 Flexibility in identity and travel documentation requirements
- 🔑 Flexibility in work experience requirements for the economic program
- 🔑 *And more..*
- 🔑 6 months expedited processing times



EMPP PARTNERS

- Communities participating in the Rural and Northern Immigration Pilot

- Canadian employers

● NGOs

● Provinces and territories



HOW THE EMPP WORKS



Labour Market needs identified by **employers**



Screening and referral of candidates abroad to employers by **NGO partners (optional)**



Application for a regional or Federal EMPP pathway supported by **NGO partners (optional)**



Support for newcomers' settlement by **Settlement Service Provider Organizations (SPOs), NGO partners, employers, and communities**



Preparation for departure to Canada by **NGO partners and/or the IOM**



Administrative facilitation measures for application processing



EMPP AT A GLANCE



132

*Total persons
admitted to Canada
under the EMPP to
date*

*48 principal applicants
and 84 dependents*



Top Occupations

*Nurse aids, orderlies & patient
service associates*

Cabinetmakers

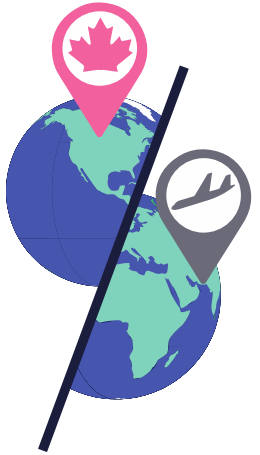
Bakers & cooks

Mechanical engineers

*Web designers +
developers*



SUPPORT FOR NEWCOMERS' SETTLEMENT



Hybrid Approach

Overseas, EMPP candidates will have access to the **same supports as other refugees**

In **Canada**, candidates arrive as economic class and have access to the **same supports as other economic immigrants**

SPOs provide IRCC-funded settlement services. These services are complemented **by informal supports provided by NGO partners, employers, and communities**. All of these organizations play a role in helping to ensure EMPP newcomers' immediate and long term settlement and integration needs are met by:



Supporting newcomers' immediate settlement and integration needs



Increasing awareness and facilitating access to settlement and community services



Championing the benefits of recruiting newcomers with economic skills



HOW TO GET INVOLVED



- Raise awareness of the EMPP among your network of employers & community, and;
- Reach out to TalentLift or Talent Beyond Boundaries/Jumpstart Refugee Talent to connect with skilled refugee and displaced talent
- Or, if you've already identified skilled refugees or other displaced individuals who would be great fit for your business, visit IRCC's website to [get advice on applying for the EMPP](https://www.canada.ca/en/immigration-refugees-citizenship/services/refugees/economic-mobility-pathways-pilot.html)



Contact: Lara Dyer (Canada Director TBB)
Email: ldyer@talentbeyondboundaries.org
Contact: Bassel Ramli (Co-founder, Jumpstart Refugee Talent)
Email: bassel.ramli@jumpstartrefugee.ca



Contact: Dana Wagner (Co-founder)
Email: dwagner@talentlift.ca



Immigration, Refugees
and Citizenship Canada

Immigration, Réfugiés
et Citoyenneté Canada

Website: <https://www.canada.ca/en/immigration-refugees-citizenship/services/refugees/economic-mobility-pathways-pilot.html>
Email: IRCC.IBEMPP-PVAMEDGI.IRCC@cic.gc.ca





QUESTIONS? COMMENTS?

